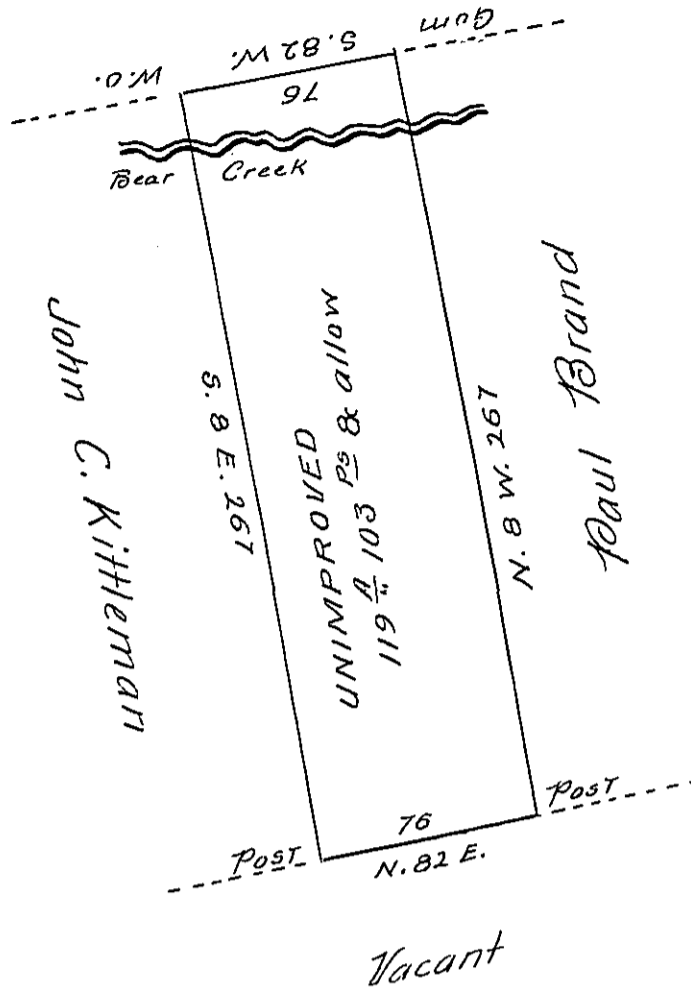


John C. Kittleman



Situate in Lower Mahantongo township Schuylkill county containing one hundred and nineteen acres and one hundred and three perches and the allowance of six per cent surveyed on the 12<sup>th</sup> day of June 1829 in pursuance of a warrant dated the 11<sup>th</sup> day of March 1829 granted David Capp

F. Lauderbrun

Dep. Sur. Schuylkill Co.

To Gabriel Hiester Esquire

Surveyor General of Penn<sup>a</sup>

IN TESTIMONY that the above is a copy of the original remaining on file in the Department of Internal Affairs of Pennsylvania, made conformably to an Act of Assembly approved the 16th day of February, 1833, I have hereunto set my Hand and caused the Seal of said Department to be affixed at Harrisburg, this thirteenth day of May 1904

*Geo. D. Brown*  
Secretary of Internal Affairs.